



London
Early Years
Foundation
prospectus

Providing
wonderful learning
experiences
every day

Contents

A letter from our CEO	2
About us	3
Our values	3
Where we are	4
Our history	5
LEYF Pedagogy	6
Creating sustainable impact	7
A journey through each key stage	7
Life at LEYF	8
Our approach to nutrition	8
Our teams	9
Your key person	9
Funding options	10

A letter from our CEO

120
years

of dedication
to all children
of every
community

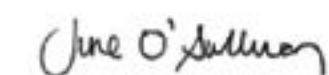
Dear Parent,

Thank you for choosing LEYF.

We are delighted you are trusting us with the care and education of your child. We will be supporting their development and learning through the LEYF Pedagogy. This means combining fun-filled days with a secure daily routine and lots of activities, both indoors and outside, that will support and extend your child's interests.

We understand that children are curious inventors and our teaching will build on this, balancing safety with exploration. Did you know we will teach Makaton to support language development?

We are really looking forward to getting to know you and your child. We have been running nurseries for over a hundred years and every new child takes us on a new journey.



June O'Sullivan MBE
CEO – London Early Years Foundation



40
nurseries

supporting
4,500
children and
families

800+
employees

40%
of our nurseries are
ranked 'Outstanding'
in comparison to the
UK average of 18%.

About us

Our approach

Together with families and communities, we enable each child to be the best they can be through wonderful experiences that enrich and extend their learning.

London Early Years Foundation (LEYF) is a family of 40 nurseries across London. We are a charitable social enterprise employing over 800 staff across London. Our socially inclusive approach ensures we make a real difference to the lives of nearly 4,500 children and their families every year, helping them to develop a passion for learning, regardless of their background.

We nurture each child, encouraging them to learn at their own pace within safe and caring settings. Our four core values: inspiring, brave, nurturing and fun, are at the heart of everything we do.

LEYF Pedagogy

The LEYF Pedagogy is reflective of our social enterprise approach. Each element of the Pedagogy is designed to strengthen children's social and cultural capital through language, social opportunities, cultural experiences and friendships.



Our values

Brave

We are curious, bold and adventurous. We push boundaries and test new ideas, always standing up for the rights of children.

Inspiring

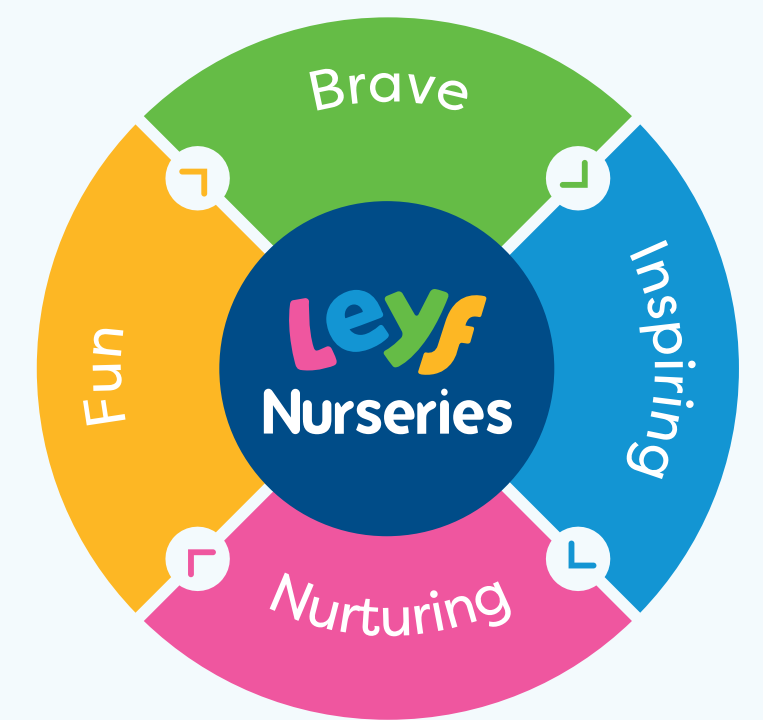
We encourage continuous development for children and staff. We challenge each other to question and explore so we learn together.

Nurturing

We are warm, caring and welcoming. We create safe and homely environments for each child.

Fun

We are imaginative and creative and learn through play.



Where we are



Barking and Dagenham

- 1 Leys Nursery & Pre-School
- 2 Ford Road Nursery & Pre-School
- 3 Furze Nursery & Pre-School
- 4 Marks Gate Nursery & Pre-School
- 5 Eastbury Nursery & Pre-School
- 6 Barking Riverside Nursery & Pre-School

Greenwich

- 7 Thames Reach Nursery & Pre-School
- 8 The Conservatoire Nursery & Pre-School

Lewisham

- 9 Hither Green Nursery & Pre-School
- 10 Playhouse Nursery & Pre-School
- 11 New Cross Nursery & Pre-School

Southwark

- 12 South Bermondsey Nursery & Pre-School
- 13 Bird in Bush Nursery & Pre-School
- 14 Burgess Park Pre-School
- 15 Gumboots Nursery & Pre-School
- 16 Camberwell Grove Nursery & Pre-School

Lambeth

- 17 The Weir Link Nursery & Pre-School
- 18 Stockwell Gardens Nursery & Pre-School
- 19 Brixton Nursery & Pre-School

Hammersmith and Fulham

- 20 Wandsworth Bridge Nursery & Pre-School

Kensington and Chelsea

- 21 Earls Court Nursery & Pre-School
- 22 Colville Nursery & Pre-School

Westminster

- 23 Angel Pre-School
- 24 Bessborough Nursery & Pre-School
- 25 Marsham Street Nursery & Pre-School
- 26 House of commons Nursery & Pre-School
- 27 Katharine Bruce Nursery & Pre-School
- 28 Harrow Road Nursery & Pre-School
- 29 Micky Star Nursery & Pre-School
- 30 Soho Family Centre Nursery & Pre-School
- 31 Carlton Hill Nursery & Pre-School

Hackney

- 32 Fire Station Nursery & Pre-School
- 33 Pembury Nursery & Pre-School
- 34 London Fields Nursery and Pre-School

Tower Hamlets

- 35 Noah's Ark Nursery & Pre-School

Richmond Upon Thames

- 36 Bushy Tails Nursery & Pre-School

Newham

- 37 Deanery Road Nursery & Pre-School
- 38 Cumberland Nursery & Pre-School
- 39 Children's Garden Nursery & Pre-School

Our history

The London Early Years Foundation (LEYF) began as the Westminster Health Society in 1903, a time of poverty and shockingly high mortality.

2000



2010



2020



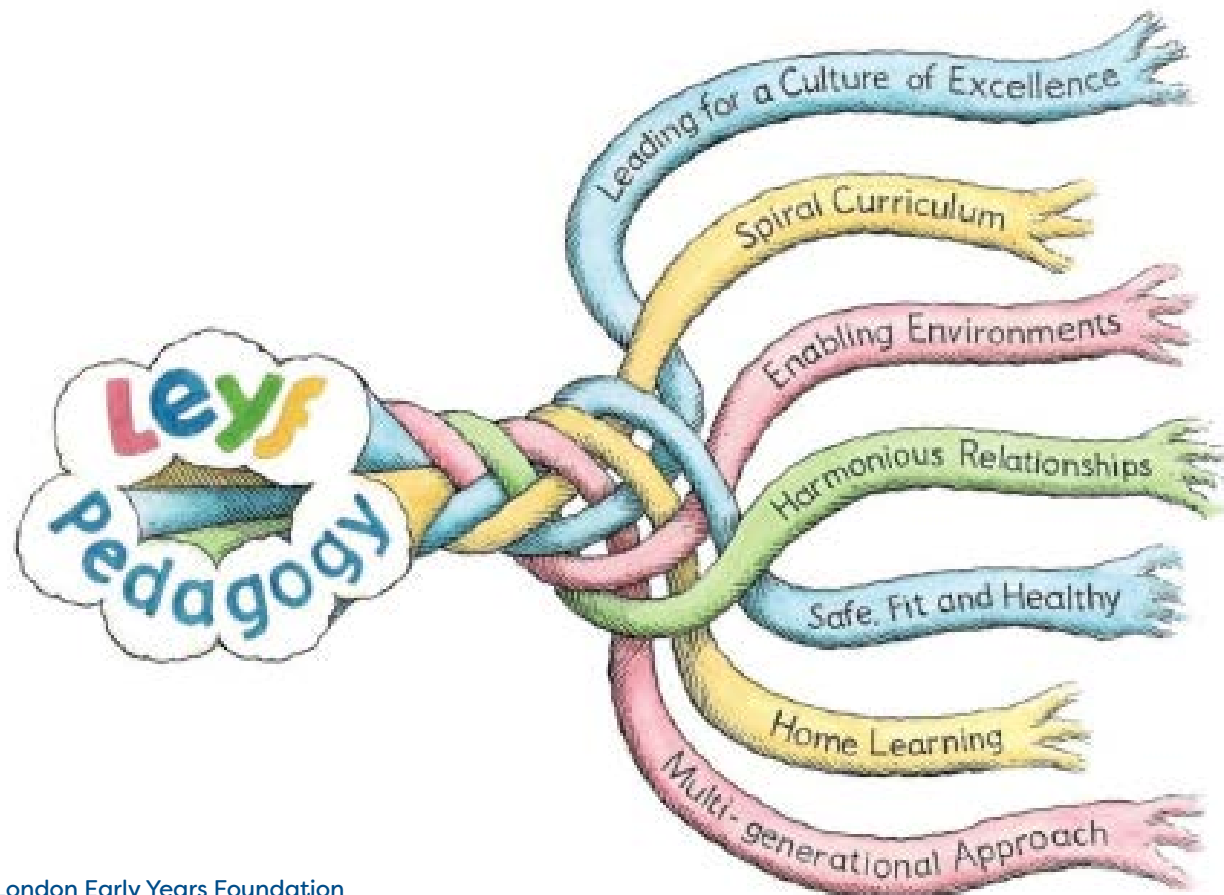
LEYF Pedagogy

The LEYF Pedagogy Rope represents how teachers at LEYF lead learning to provide the very best outcomes for our children. Each of the 7 strands of the Pedagogy is based on a wide range of research and is made of many learning threads that interweave to deliver excellent teaching and wonderful experiences for our children.

Each strand needs all the others. Just like a rope, the more learning threads that run through each strand, the stronger the rope and the better the teaching and learning that goes on in our nurseries.

Similar to synaptic connections in a child's brain, all learning is strengthened through repetition and application. LEYF teachers understand this and ensure that they apply the multiple strands of our Pedagogy to every element of our play and activities in our nurseries.

Every child has a right to the rich, interwoven learning opportunities vital for their development and key to extending their potential.



7

Strands of the Pedagogy

1

Leading for a Culture of Excellence

We believe in what we do and live our values every day.

2

Spiral Curriculum

Extending and supporting children to reach their potential.

3

Enabling Environments

Using the nursery space, indoors and out, to create exciting learning opportunities.

4

Harmonious Relationships

Building loving relationships between staff, children and parents.

5

Safe, Fit and Healthy

Nutritious home-cooked food, encouraging our children to be active, healthy and keeping them safe.

6

Home Learning

Conversations with parents to extend and enrich children's development between home and nursery.

7

Multi-Generational Approach

Connecting with the local community so families grow together and find their place in a changing world.



Creating sustainable impact

As a childcare social enterprise, LEYF recognises its duty to tread lightly on the earth our smallest citizens will inherit. Children and staff are taught how they can take better care of the planet.

Green LEYF is an internal system designed to raise awareness of Early Years Sustainability, sustainable business practices, processes and activities as well as supporting the children, the staff and parents to become change champions.

We are proud to have written the first Early Years Level 4 qualification – endorsed by CACHE, Developing Sustainability in the Early Years.

This enables us to train Eco-Champions within our nurseries to help educate and teach our children about being environmentally friendly and respectful to nature.

Green LEYF initiatives

With the support of our sustainable partners, we have been able to introduce green initiatives across our nurseries. Our nurseries feature bug hotels, garden beds and a variety of plants to enhance the nursery's outdoor space and attract a wide variety of wildlife.

We are building sustainability gardens at seven of our nurseries which the children have helped design.



A journey through each key stage

At 4 to 5 years

Between the ages of four to five years old, children have a greater understanding of themselves and are able to make decisions within their everyday life. They are beginning to understand the concept of humour and will often enjoy sharing a joke or two with others.

At 3 years

Now that your child has turned 3 years old, they are wanting to know more about their community, asking the 'why' and 'how' questions. They are beginning to form long-lasting friendships and share experiences with their peers, often role modelling those that have had an impact on them.

At 2 years

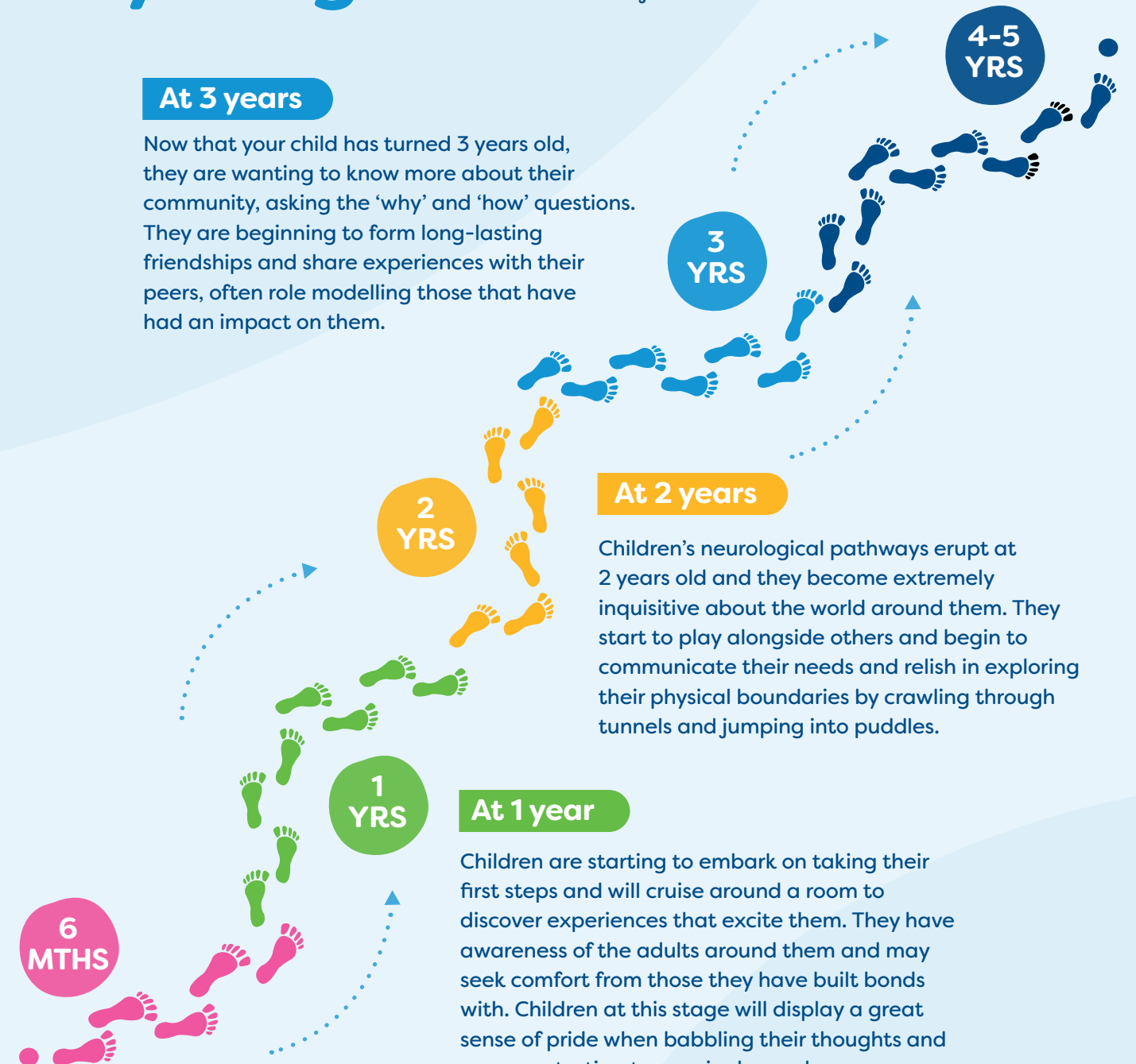
Children's neurological pathways erupt at 2 years old and they become extremely inquisitive about the world around them. They start to play alongside others and begin to communicate their needs and relish in exploring their physical boundaries by crawling through tunnels and jumping into puddles.

At 1 year

Children are starting to embark on taking their first steps and will cruise around a room to discover experiences that excite them. They have awareness of the adults around them and may seek comfort from those they have built bonds with. Children at this stage will display a great sense of pride when babbling their thoughts and are now starting to use single words.

At 6 months

Babies will be discovering the world around them, using their senses, and will often become fascinated with their own hands. They are now beginning to become more physically confident and may sit and reach for items of interest.





Life at LEYF

Each day, your child will follow our curriculum. We're focused on developing children's natural curiosity and confidence so they leave nursery as inquisitive explorers who love learning.

In the nursery

Our staff are trained to provide wonderful learning experiences every day to your children. We use a range of teaching strategies to engage and extend children's learning, including observing, modelling, questioning and creative discovering. Our teachers know when to engage children in conversation and when to stand back and let them discover the world by themselves. Activities include messy play, yoga and nature walks.

In the community

Strong community relations are at the heart of our ethos and we believe nurseries have a strong role to play in community cohesion. We take children out to local markets, the library as well as trips to London museums. We also invite parents, grandparents, the elderly and key people, such as police, into our nurseries so that children understand their place in the world.

Our approach to nutrition, food education and meals

At LEYF, we know we have a unique opportunity to influence the daily health and eating habits of our children by providing them with meals and snacks every day.

Our in-house chefs prepare fresh, nutritious meals at each of our nurseries, and healthy eating and nutrition are central to the 'safe, fit and healthy' strand in our Pedagogy.

The LEYF Early Years Chef Academy and professional qualification is the first of its kind in the country. The qualification ensures Early Years chefs (both at LEYF and across the sector) understand children's nutritional needs and helps embed a healthy food culture at all children's nurseries.

Our chefs develop LEYF's seasonal menus collaboratively, taking into account the preferences of the children. The menus are developed to expand the children's palates, offering the best mix of nutrients, flavours, textures and food groups every week. We serve fish at least twice weekly, fresh fruit and vegetables every day, milk with meals and snacks, and provide continual access to drinking water. We also cater for allergies or other dietary requirements.

Food education

We teach our children the importance of a balanced diet. We provide children with experiences throughout the day to develop their understanding and enjoyment of food. For example, our menus include recipes from around the world to help broaden children's cultural experiences.

We also educate children about where our food comes from and how it impacts the planet. Many of our nurseries have herb gardens and vegetable patches where the children learn about the journey food makes before it reaches our plates. Our chefs and teachers regularly take children out on food-



related outings – to local farmers' markets or even the fishmonger. This helps children to familiarise themselves with raw ingredients, rather than processed products.

Mealtimes

Mealtimes are a great opportunity to develop children's social skills.

Our meals are served 'family style', which means children help themselves from communal serving dishes and sit together with the teachers.

We help children of all ages develop social skills and independence, such as helping babies learn to self-feed, toddlers to use cutlery, and pre-schoolers to serve themselves. Particular attention is paid to how food is presented to make it as appealing as possible. We ensure alternative foods are presented in a similar way so that children with allergies or dietary requirements feel included.



Your key person

Your settling-in period begins 3 days prior to your child's actual start date. When you arrive, our Nursery Manager will welcome you, introduce you to your child's key person and answer any questions you have.

Your child's key person will be your first point of contact. They will give you regular updates at drop off and pick up, as well as formal progress checks every few months.

Parent Zone/iConnect

iConnect is software that our teachers use to record and assess children's progress and development against the Early Years Foundation Stage (EYFS) and the LEYF Pedagogy. Teachers use iConnect to upload photographs of your child participating in specific activities and write narratives about your child's development.

The ParentZone app allows parents to access this information on iConnect, view their child's progress and make any comments. Parents are also able to upload their own photos and feedback from their own home learning.

These updates are at the heart of LEYF nurseries' commitment to building harmonious relationships between families and staff, and extending learning from nursery to home.

Settling-in

We look forward to welcoming you and your child into our family. Building good relationships with parents is a key part of our ethos.

We know that the transition from home to nursery can be difficult. To make this process as smooth as possible, every child has a 'settling-in period'.

This helps us get to know you and your child, and ensures they feel happy, safe and secure with us.

During your child's settling-in period, you are invited to stay with them in our nursery – initially, close by in the same room. Gradually, as and when your child is ready, your presence is reduced.

This process helps your child form a secure bond with their key person.

On a family's first visit, it is a requirement that parents complete:

- Admission forms (including parental consent) and
- An Emergency Contact Sheet.

Our teams

All our teachers are highly qualified and trained in Early Years education and care, and are extremely passionate about what they do.

Our teachers provide children with a nurturing and safe environment and provide wonderful experiences that enrich and extend their learning so they can be the best they can be.

LEYF offers all our staff free training sessions through our LEYF Academy and we prioritise their learning and development. By investing in our staff, we are also investing in your child.

“

Our daughter has adored the staff in every room she's been in as she's grown. We love how all the children seem to know all the staff, and the staff know them too. It's a wonderful community.”

Allen, LEYF Parent from Gumboots



Apply for a place
Scan this QR code
to apply.





Funding options

Childcare funding can be complicated. We can talk you through the options and let you know what's available, as this can vary according to which borough you live in. You can find all this information and more on www.childcarechoices.gov.uk

Government funding

- To support with the cost of childcare, the Government offers a range of funding options.
- To find out what you might be entitled to visit childcare choices or our website

Universal Credit

- If you're on a low income or unemployed, you may be eligible for Universal Credit.
- For working families claiming Universal Credit, in England, Scotland, Northern Ireland and Wales
- With children under 17
- 85% of eligible childcare costs, up to a cap.

Tax-Free Childcare

- For working families, including the self-employed, in the UK
- Earning under £100k and at least £131 per week (equal to 16 hours at the National Minimum or Living Wage) each
- Who aren't receiving Tax Credits, Universal Credit or childcare vouchers
- With children aged 0–11 (or 0–16 if disabled)
- For every £8 you pay into an online account, the Government will add an extra £2, up to £2,000 per child, per year.



“Children are like tiny flowers: they are varied and need care, but each is beautiful alone and glorious when seen in the community of peers.”
Friedrich Fröbel



leyf Nurseries

London Early Years Foundation
121 Marsham Street, London, SW1P 4LX

 www.leyf.org.uk

 020 7834 8679

 info@leyf.org.uk

   @LEYFonline

 London Early Years Foundation (LEYF)

Company no. 2228978 Charity no. 299686